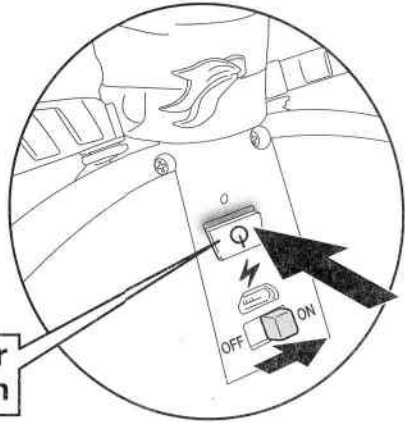




WINGSUIT

To activate, turn switch to "ON" position and press down on the power button. Press the button once for "Quick Stream" flight and twice for "Advanced Glide" flight.

To quickly stop the motor, either press the power button or turn the switch to the "OFF" position.



Power Button

QUICK STREAM :

- Press Power Button 1 time and the LED blinks once in response.
- You'll have a 2 second delay to prepare for flight.
- The Wingsuit will then activate and run for 6 seconds. LED will keep blinking while motor is running.

ADVANCED GLIDE :

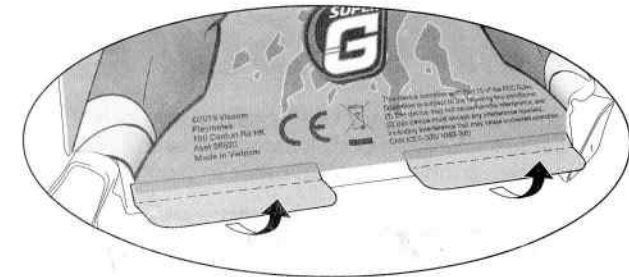
- Press Power Button 2 times and the LED blinks twice in response.
- You'll have a 2 second delay to prepare for flight.
- The Wingsuit will then activate and run for 12 seconds. LED will keep blinking while motor is running.

INCLUDES:

- 1 Wingsuit flyer
- 1 USB charging cable

FOR BETTER FLIGHT PERFORMANCE:

Hold the Wingsuit with both hands along the sides and release into the air (don't throw) when propellers are in motion.



Try adjusting the rudder angle if Wingsuit is not maintaining altitude.

[youtube.com/SuperGtoys](https://www.youtube.com/SuperGtoys)

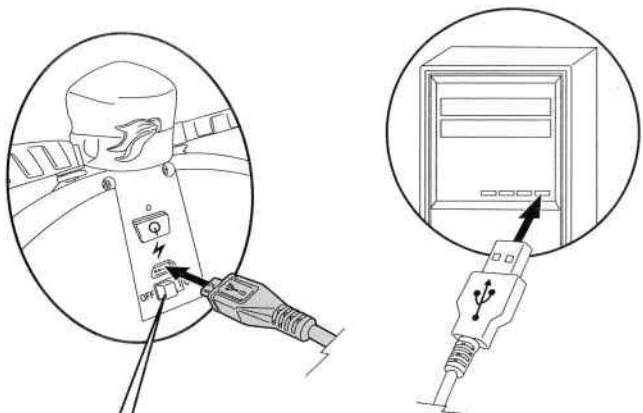
[facebook.com/SuperGtoys](https://www.facebook.com/SuperGtoys)

For more detailed instruction information visit www.Playmatestoy.com



WINGSUIT

To charge, turn switch to "OFF" position and connect USB cable to Wingsuit port, located below the power button. Then connect the USB cable to a computer.



- LED light will glow in RED when Wingsuit is charging. When fully charged, the light will turn to GREEN. A full charge takes approximately 30-38 minutes.
- When battery is running low during play, the motor will only run for a few seconds and LED will turn red to indicate a charge is needed.
- Wait 10 to 15 minutes to recharge battery if the battery is warm.

8+

Asst. #56520
Item #56523



©2019 Viacom Overseas Holdings C.V. All Rights Reserved. Rise of the Teenage Mutant Ninja Turtles and all related titles, logos and characters are trademarks of Viacom Overseas Holdings C.V.
©2019 Viacom International Inc. All Rights Reserved. Nickelodeon and all related titles, logos and characters are trademarks of Viacom International Inc.
Super G is a registered trademark of Playmates International Company Ltd.
©2019 Playmates. Playmates International Company Ltd. 23/F, The Toy House, 100 Canton Road, TST, Kowloon, Hong Kong. PRINTED IN VIETNAM.

The toy is only to be connected to class II or III equipment bearing the following symbols:



- Please keep all relevant information in instruction sheet for further reference.
- The toy contains a battery that is non-replaceable.
- The USB charging cord needs to be examined regularly for damage; it must not be used until the damage has been repaired.

Battery requirement for toy:

Power Supply : ———

Rating : DC 3.7V, 260 mAh

Battery : 1 X 3.7V 260mAh LiPo Rechargeable battery pack included.

BATTERY WARNING :

- Do not put lithium ion (LiPo) batteries in the trash.
- Battery may explode or leak chemicals if opened, exposed to fire or high temperature.

FCC STATEMENT

This device complies with Part 15 of the FCC Rules. Operation is subject to the following two conditions: (1) this device may not cause harmful interference, and (2) this device must accept any interference received, including interference that may cause undesired operation. Under an environment with severe electrostatic discharge, the product may malfunction and require user reset.

Warning:

Changes or modifications to this unit not expressly approved by the party responsible for compliance could void the user's authority to operate the equipment.

NOTE:

This equipment has been tested and found to comply with the limits for a Class B digital device, pursuant to Part 15 of the FCC Rules. These limits are designed to provide reasonable protection against harmful interference in a residential installation. This equipment generates, uses, and can radiate radio frequency energy and, if not installed and used in accordance with the instructions, may cause harmful interference to radio communications. However, there is no guarantee that interference will not occur in a particular installation. If this equipment does cause harmful interference to radio or television reception, which can be determined by turning the equipment off and on, the user is encouraged to try to correct the interference by one or more of the following measures:

- Reorient or relocate the receiving antenna.
- Increase the separation between the equipment and receiver.
- Connect the equipment into an outlet on a circuit different from that to which the receiver is connected.
- Consult the dealer or an experienced radio TV technician for help.

To Reset:

Slide the switch to "OFF", then slide the switch to the "ON" mode.



•ADULT SUPERVISION REQUIRED.

•For Outdoor Use only –

Not to be used indoors due to product flying range. Only play in a large open area, away from power lines. Keep toy in sight.

•Warning:

Not suitable for children under 8 years of age. Do not change or modify anything on the toy.

⚠ CAUTION:

TO AVOID RISK OF EYE INJURY NEVER FLY NEAR YOUR FACE. KEEP PROPELLER AWAY FROM YOUR FINGERS, HAIR, EYES, AND OTHER BODY PARTS. DO NOT START UP AND FLY WHEN PERSONS, ANIMALS OR ANY OBSTRUCTIONS ARE WITHIN THE FLYING RANGE OF THE AIRCRAFT (200FT/60M).

⚠ WARNING:

IF PROPELLER(S) BECOME DAMAGED OR BROKEN, DO NOT FLY. FLYING WITH BROKEN PROPELLER(S) MAY CAUSE DAMAGE OR LEAD TO INJURY.

⚠ WARNING:

DO NOT AIM AT EYES OR FACE.

Conforms to product safety standards ASTM F963.

Final product appearance, accessories and colors may vary.

Please keep all relevant information for further reference.

[youtube.com/SuperGtoys](https://www.youtube.com/SuperGtoys)

[facebook.com/SuperGtoys](https://www.facebook.com/SuperGtoys)



US Distributor:
Playmates Toys Inc.
909 N. Pacific Coast Highway,
Ste 800 El Segundo, CA 90245
Email: toys@playmatestoys.com

For more detailed
instruction information visit
www.Playmatestoys.com